

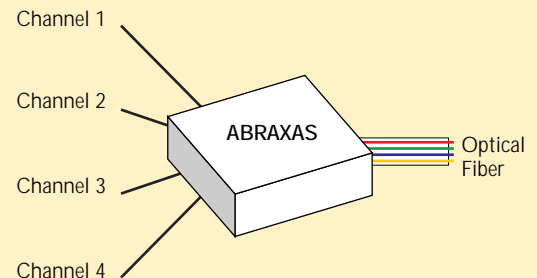
ABRAXAS

The ABRAXAS is the industry's first commercially available Wavelength Division Multiplexer (WDM) suitable for expanding optical fiber bandwidth capacity in Local Area Network (LAN) applications. The system combines up to four full-duplex applications over a single pair of optical fibers spanning up to 5 km. Each application is physically connected to protocol independent channels/ports, operating at full rated speeds from 10 to 155 Mbps per port.

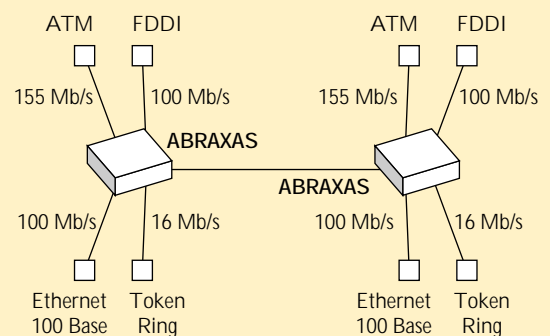
The ABRAXAS utilizes a unique approach to the WDM technology that allows cost-effective bandwidth growth. Since each wavelength is completely isolated from the other and the ABRAXAS never processes the data, input protocols can be mixed within the same link. The housing is configured like a patch panel, with no software or application setup required. An SNMP agent option is available to provide out-of-band management that can monitor an entire WDM network from one central console.

The ABRAXAS is a highly cost-effective, easy-to-use solution that saves time and money when adding new applications within a LAN. It multiplies the capacity of existing fiber four fold and eliminates the need to install additional fiber cable.

Wavelength Division Multiplexing



LAN Application



Key-Features

- Four ports from one pair of fibers
- Low-cost WDM design
- Protocol independent
- 10 to 155 Mbps per channel
- SNMP agent option
- Transmission up to 5 km



Technical Specifications

Input Fiber:	Multimode 50/125 or 62/125 µm or Singlemode 9/125 µm
Local Port Output:	1300 nm -14 to -21 dBm
Local Port Input:	1300 nm -4 to -29 dBm
Remote Port Power Budget:	8 dB at 1310 and 1500nm
Data Rate:	10 to 155 Mbps
SNMP Interface:	RS232 / RJ 45 (ETHERNET) optional
Port Configuration:	ST Connectors
Size (h×w×d):	5.2 × 18.9 × 21.5 inch (13.25 × 55.0 × 48.3 cm)
Voltage:	90 – 264 VAC
Watt:	82 Watt
Operating Temperature:	10 – 50° C
Operating Humidity:	10 – 90% non condensing
Indicator/Switches:	Power On / Off

Order Information

A	D	S	W	M	A	B	R	A			
---	---	---	---	---	---	---	---	---	--	--	--

SNMP option
1... Yes
2... No

Second Power Supply
1... Yes
2... No

Number of Channels
2... 2 channels
3... 3 channels
4... 4 channels



ADVA Optical Service & Solutions GmbH

Fraunhoferstr. 22
82152 Martinsried/Munich
Germany

Phone +49 (0) 89 8 95 77-0
Fax +49 (0) 89 8 95 77-1 99

Web www.advaoptical.com
Email info@advaoptical.com



ADVA Optical Solutions

82 E. Maltbie Avenue
Suffern, NY 10901
U.S.A.

Phone +1 914 369-0700
Fax +1 914 369-1010

Email bmccann@advaoptical.com



AMS ELECTRONIC S.A.R.L.

6 Avenue des Andes
ZA de Courtabœuf
91952 LES ULIS CEDEX

Phone +33 (0) 1690 70254
Fax +33 (0) 1690 78719

Email 106005.1572@compuserve.com



AMS ELECTRONIC LTD.

Optotech Division
The Old Malthouse
4-6 Pennywell Road
Easton, Bristol BS5 0TJ
United Kingdom

Phone +44 (0) 117 935-0444
Fax +44 (0) 117 935-0555

Email 101716.2532@compuserve.com



Optical Service & Solutions